



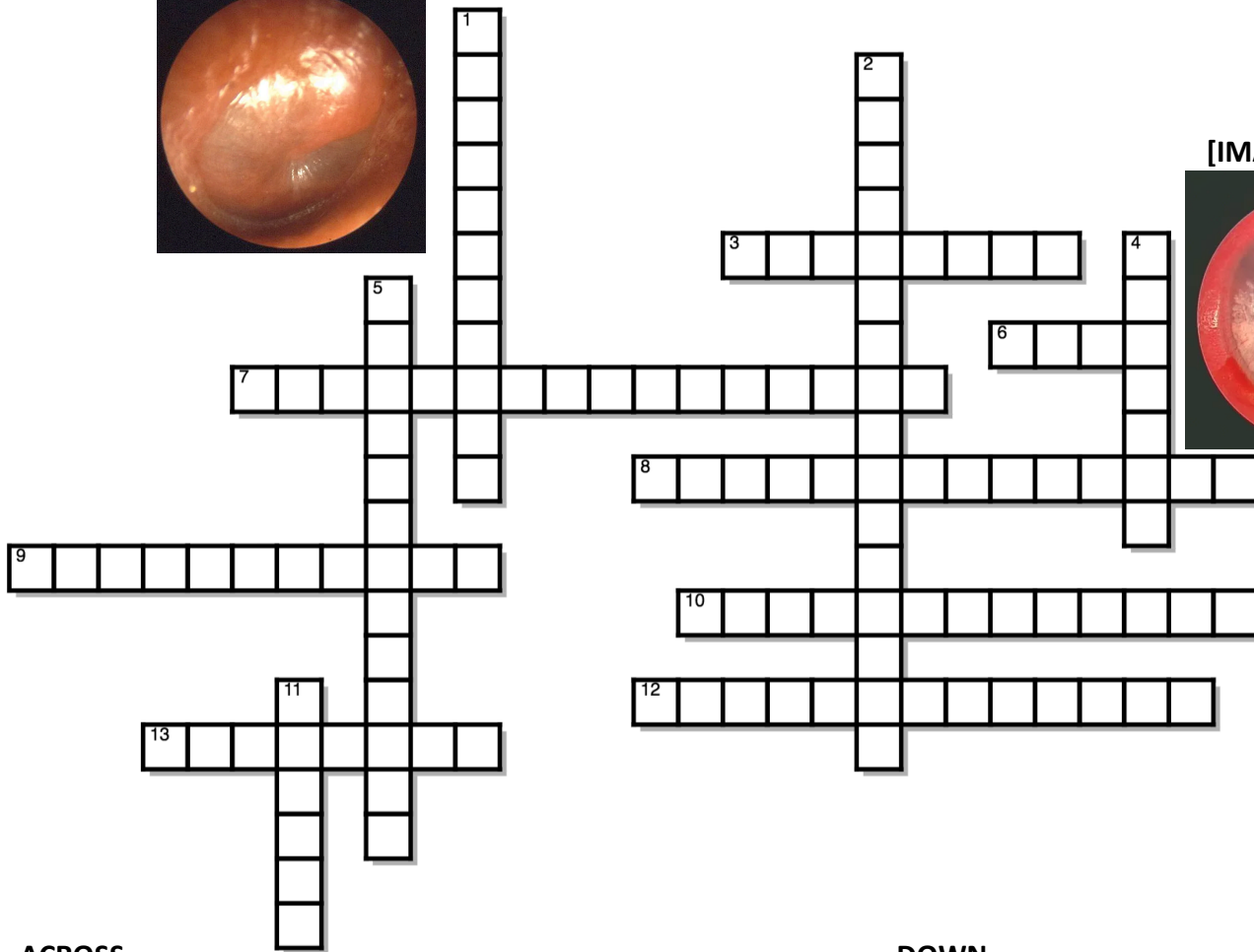
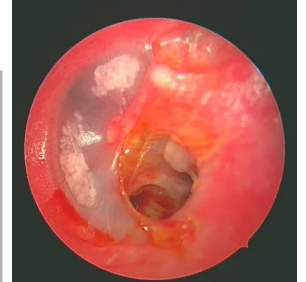
# Otological infections crossword

ENT·Education·Swansea  
*"Education through Innovation"*

[IMAGE 1] 2 DOWN



[IMAGE 2] 7 across



**ACROSS**

- 3. A merocele insert used as an adjunct to treat otitis externa in the presence of significant canal stenosis (4, 4)
- 6. The area from which epithelial cells migrate on the tympanic membrane (4)
- 7. A chalky deposit, of no clinical relevance, that is sometimes found in the tympanic membranes of patients who have suffered with recurrent tympanic perforations (**Image 2**) (16)
- 8. A complication of acute otitis media causing a fluctuant erythematous swelling in the post auricular area (7, 7)
- 9. A complication of a middle ear infection that can be graded by the House-Brackmann scale (6, 5)
- 10. A slight misnomer of a condition, whose ancient Greek/Latin name would have you believe it was a fatty tumour (13)
- 12. An infective ENT condition associated with vertigo (that lasts days to weeks), nausea, vomiting, tinnitus & hearing loss (13)
- 13. A small localised abscess in the ear canal (8)

**DOWN**

- 1. The name of the gram-negative bacteria commonly found in immune compromised patients suffering with Malignant otitis externa (11)
- 2. Spot diagnosis for **Image 1** (5, 6, 5)
- 4. A Teflon insert that can be used to surgically treat glue ear (7)
- 5. The only topical antibiotic scientifically proven not to cause ototoxicity (13)
- 11. The likely causative pathogen resulting in a scanty creamy white otorrhoea. Also referred to as "wet newspaper" (6)